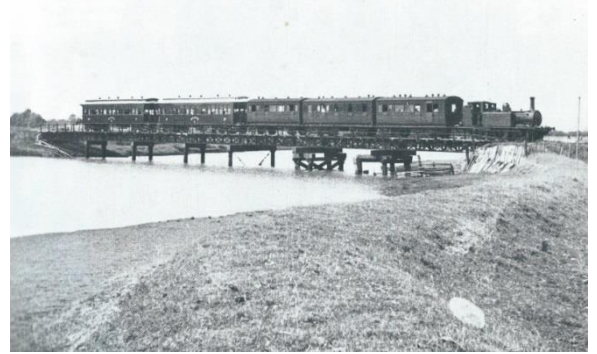


## Then and Now: WC&P Light Railway in Wick St. Lawrence



Wick St. Lawrence and Worle have always had strong connections. These are now reflected in the modern Parish of Worle, which is responsible for Church of England churches in both areas.

In days gone by, one of the most significant links took the form of our wonderful light railway from Weston via Clevedon to Portishead. The railway from Weston to Clevedon was completed in 1897 and was later extended to Portishead. The mid-point of its route was considered to be the stop at Wick St. Lawrence, which was 3.8 miles from Weston. The Wick stop was serviced by a small shed-like station as early as 1910. The picture top left was taken on 5<sup>th</sup> April, 1934 when the wooden bridge leading to Wick Jetty collapsed under the weight of the 'Hesperus'. Just north of the Wick station the dear old railway had to negotiate the River Yeo, which is pictured above right, in 1937, with the river at high tide. The remaining stanchions of the bridge were photographed, below in 2015.

The WC and P service operated at a snail's pace and was somewhat unreliable, but was regarded with fondness. Outings to Clevedon or Weston were popular and many of the older generation tell tales of picking wild flowers or mushrooms along the way. There is a strong case for claiming that the portion of the line from Worle Town, via Ebdon Lane, Wick St. Lawrence, Wharf, to Ham Lane was the most attractive, interesting and dangerous section of the little line.



The line closed in May 1940 and is still deeply mourned. Links with our neighbours are just as important as they ever were and are always a serious loss.